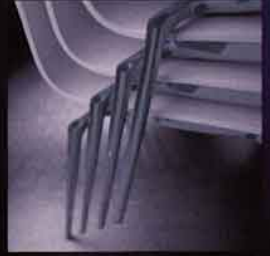


Dulux powder coatings
colour selector

Dulux[®]

POWDER coatings

colour selector



Dulux powder coatings
colour selector

Thank you for choosing the Dulux Powder Coatings "Colour Selector"

About Dulux

Dulux Powder Coatings have been manufacturing locally for over 25 years. As pioneers in the powder coatings industry, Dulux offers the most comprehensive colour and product range in the market.

If you choose Dulux, you can rest assured that you will receive the quality and support you have come to expect from Australia's leading supplier of surface coatings - **Worth doing, worth Dulux**

Why Powder Coating

Powder coatings have the advantage over liquid paints in that they do not contain harmful solvents. They provide tougher and harder surfaces than most paints. Powder coatings do not suffer from solvent "running" and "sagging" and therefore can be applied thicker than paints, giving longer lasting finishes.

The Process

Powder coatings are a solid material that are applied with specialised "electrostatic" guns, then "baked" in a hot oven at about 200°C. Powder coatings are versatile, whether they are used on aluminium windows, galvanised pool fencing, steel engine blocks, metal furniture or glass bottles. Powder coatings are one of the most environmentally friendly methods for finishing your products.

How To Order

Simply quote the line/shade number and name of the colour you require (for example "971 84688 - Dulux Volcanic Pearl") and our Customer Service staff will assist you with your order or any queries you may have in relation to Dulux Powder Coatings.

Colour Range

Dulux Powder Coatings offer a range of over 120 stock colours, which cater for a variety of tastes - from Heritage to Contemporary, Classic to Modern. Our colour range includes the earthy tones of BHP's Colorbond roofing colours (● represents the current Colorbond roofing range) and the sophisticated Dulux Pearls.

In addition to this, as a member of the Australasian Institute of Metal Finishing (AIMF), Dulux Powder Coatings support the Australian Window Association (AWA) by stocking the 30 widely used Powder Coating Standards (PCS) colour range.

Special Colours

Dulux Powder Coatings also provides a Made To Order (MTO) facility to produce colour specific and special effect powders, such as Pearls, Ripples and Textures. For additional information regarding the required minimum order quantity or samples of these effects, please contact our Customer Service Staff on **13 2499**.

Choosing The Right Colour

With such a vast array of colours, there are not enough names to describe them all. That's why each colour has a unique reference number.

On rare occasions some colours, whether powders, paints or furnishings, may share the same name but be entirely different. When choosing colours, remember to always specify both the line shade number and its name. Where uncertainty prevails, request a colour sample.

Still in doubt as to what colour to use? For expert advice on colour selection, Dulux provides a colour consultancy service for a small fee. Contact Dulux Decorative Customer Service on **13 2525** and a colour consultant will personally visit you and assist you with your colour selections to suit your lifestyle.

Total Support

By choosing Dulux, you can also take advantage of the extensive range of decorative paints to finish your project. Your local Dulux Trade Centre or Decorative Customer Service consultant can advise you which product best suits your needs.

Making It Last

Like with most things, ongoing maintenance encourages longevity. Powder coated surfaces should be regularly washed, at least every six months. Contact our Customer Service Staff on **13 2499** for a brochure on how to make it last.

Warranties

Dulux Powder Coatings has a comprehensive range of Super Durable powder that offers premium coverage in both colour and film integrity for a warranty period of up to 15 years on aluminium substrates. The Super Durable range is the leading performing powders within the industry and meets the highest international standards in their category.

As well as this, a variety of our General Purpose powders satisfies the requirements of the 7 year film integrity warranty for architectural aluminium when applied in accordance with Australian Standard AS3715.

Which Powder To Select

The colours and products displayed on this Colour Selector are suitable for a wide range of applications. In general, all these powders and colours can be used with confidence over aluminium, steel, zinc coated metals and castings. Some products are more suited to certain metals than other powders, such as Dupol FPG for hot dipped galvanising. For further information, please refer to the Dulux technical data sheets and information bulletins available through Dulux Customer Service.

Worth doing, worth Dulux

Our Colour Range

POWDER COATINGS

Colour Name	Product Name	Line/ Shade No	Color Level	High UV Tolerant	Qualicoat PCS Reference
Admiralty	Alphatec Plus	961 51017	Satin	✓	
Anotec XT Dark Grey	Anotec XT	973 51276	Matt	✓	
Anotec XT Mid Bronze	Anotec XT	973 51014	Matt	✓	
Anotec XT Off White	Anotec XT	973 51271	Matt	✓	
Anotec XT Silver Grey	Anotec XT	973 91772	Matt	✓	
APD Grey	Alphatec Plus	961 32788	Satin	✓	PCS 15
Arrowhead	Alphatec M32	964 50558	Gloss	✓	PCS 17
Aubergine	Alphatec Plus	961 84736	Satin	✓	
Aura Grey	Alphatec Plus	961 96958	Satin	✓	
Barley	Alphatec M32	964 50550	Gloss	✓	
Bamster White	Alphatec Plus	961 84772	Satin	✓	
Bench Pearl	Dulux Pearl	971 84670	Gloss	✓	
Berry Grey	Alphatec M32	964 81573	Gloss	✓	PCS 16
Black Gloss	Alphatec M32	964 32994	Gloss	✓	PCS 30
Black Matt	Alphatec Plus	961 18519	Matt	✓	PCS 28
Black Oxide Pearl	Dulux Pearl	971 52552	Gloss	✓	
Black Satin (C/Bond Ebony)	Alphatec Plus	961 19288	Satin	✓	PCS 29
Black Satin (C/Bond Ebony)	Dupul FPG	959 81678	Satin	✓	
Blaze Blue	Alphatec M32	964 19641	Gloss	✓	
Candia Cream	Alphatec M32	964 81796	Gloss	✓	
Charcoal	Alphatec M32	964 32999	Gloss	✓	PCS 15
Charcoal Mat Pearl*	Dulux Pearl	971 10090	Gloss	✓	
Claret	Alphatec Plus	961 32774	Satin	✓	PCS 22
Classic Hawthorn Green	Alphatec M32	964 33009	Gloss	✓	
Clay Pot	Alphatec Plus	961 72765	Satin	✓	
Colorbond Armour Grey	Alphatec Plus	961 84760	Satin	✓	
Colorbond Armour Grey†	Dupul FPG	959 85542	Matt	✓	
Colorbond Black	Alphatec Plus	961 84763	Satin	✓	
Colorbond Black†	Dupul FPG	959 84764	Matt	✓	
Colorbond Caulfield Green	Alphatec Plus	961 84219	Satin	✓	
Colorbond Caulfield Green†	Dupul FPG	959 52337	Matt	✓	
Colorbond Ebony (Black Satin)	Alphatec Plus	961 19600	Satin	✓	
Colorbond Ebony (Black Matt)	Dupul FPG	959 84762	Matt	✓	
Colorbond Gull Grey	Alphatec Plus	961 83546	Satin	✓	
Colorbond Gull Grey†	Dupul FPG	959 84171	Matt	✓	
Colorbond Heritage Red	Alphatec Plus	961 84752	Satin	✓	
Colorbond Heritage Red†	Dupul FPG	959 52394	Matt	✓	
Colorbond Merino†	Alphatec Plus	961 84212	Satin	✓	
Colorbond Merino†	Dupul FPG	959 51050	Matt	✓	
Colorbond Mist Green	Alphatec Plus	961 84221	Satin	✓	
Colorbond Mist Green†	Dupul FPG	959 36648	Matt	✓	
Colorbond Mountain Blue	Alphatec Plus	961 83249	Satin	✓	
Colorbond Mountain Blue†	Dupul FPG	959 84113	Matt	✓	
Colorbond Off White	Alphatec Plus	961 84008	Satin	✓	
Colorbond Off White†	Dupul FPG	959 84756	Matt	✓	
Colorbond Pale Terracotta	Alphatec Plus	961 84738	Satin	✓	
Colorbond Pale Terracotta†	Dupul FPG	959 84301	Matt	✓	
Colorbond Rivergum Green*	Alphatec Plus	961 84234	Satin	✓	
Colorbond Rivergum Green†	Dupul FPG	959 22027	Matt	✓	
Colorbond Slate Grey	Alphatec Plus	961 84520	Satin	✓	
Colorbond Slate Grey†	Dupul FPG	959 51996	Matt	✓	
Colorbond Smooth Cream	Alphatec Plus	961 84655	Satin	✓	
Colorbond Smooth Cream†	Dupul FPG	959 84332	Matt	✓	
Colorbond Stone*	Alphatec Plus	961 84215	Satin	✓	
Colorbond Stone†	Dupul FPG	959 36656	Matt	✓	
Colorbond Toms Blue	Alphatec Plus	961 84298	Satin	✓	
Colorbond Toms Blue†	Dupul FPG	959 84498	Matt	✓	
Colorbond Tuscan Red	Alphatec Plus	961 84361	Satin	✓	
Colorbond Tuscan Red†	Dupul FPG	959 84215	Matt	✓	
Colorbond Wheat†	Alphatec Plus	961 84365	Satin	✓	
Colorbond Wheat†	Dupul FPG	959 84386	Matt	✓	
Corio Blue	Alphatec M32	964 85008	Gloss	✓	
Deep Brunswick Green	Alphatec M32	964 60069	Gloss	✓	

Colour Name	Product Name	Line/ Shade No	Color Level	High UV Tolerant	Qualicoat PCS Reference
Deep Pool	Alphatec Plus	961 78902	Satin	✓	
Deep Sea Pearl	Dulux Pearl	971 84681	Satin	✓	
Deerskin	Alphatec Plus	961 32816	Satin	✓	PCS 06
Fashion Grey	Alphatec Plus	961 78212	Satin	✓	
Grey Neuse	Alphatec M32	964 50600	Gloss	✓	
Horizon Blue	Alphatec M32	964 33384	Gloss	✓	
Hunter Red	Alphatec Plus	961 84209	Satin	✓	
Ivory Coast	Alphatec M32	964 82053	Gloss	✓	PCS 10
Lemon Yellow	Alphatec M32	964 32130	Gloss	✓	
Light Grey	Alphatec M32	964 32519	Gloss	✓	
Light Topaz	Alphatec Plus	961 73018	Satin	✓	
Magnolia	Alphatec M32	964 32688	Gloss	✓	PCS 09
Metropole Bronze Pearl	Dulux Pearl	971 59003	Matt	✓	
Misty Blue Pearl	Dulux Pearl	971 84600	Gloss	✓	
Muse Yule Stone	Alphatec Plus	961 92019	Satin	✓	
Mother of Pearl	Dulux Pearl	971 84678	Gloss	✓	
Navy	Alphatec M32	964 50232	Gloss	✓	
New Bright White	Alphatec M32	964 84888	Gloss	✓	PCS 03
New Hammarby Roman	Alphatec Plus	961 84657	Satin	✓	PCS 20
Notre Dame	Alphatec M32	964 30672	Gloss	✓	PCS 13
Ocean Mist	Alphatec Plus	961 83250	Satin	✓	
OT White	Alphatec Plus	961 33732	Satin	✓	
Ode Painter	Alphatec Plus	961 50293	Satin	✓	PCS 19
Orange X15	Alphatec M32	964 51439	Gloss	✓	
Opal	Alphatec Plus	961 38506	Matt	✓	PCS 14
Palma	Alphatec M32	964 51061	Gloss	✓	
Periwinkle	Alphatec M32	964 50276	Gloss	✓	
Pommel Blue	Alphatec M32	964 51094	Gloss	✓	
Putney	Alphatec Plus	961 32622	Satin	✓	PCS 07
Precious Bronze Pearl	Dulux Pearl	971 84695	Satin	✓	
Precious Copper Pearl	Dulux Pearl	971 96505	Satin	✓	
Precious Gold Pearl	Dulux Pearl	971 96504	Gloss	✓	
Precious Silver Pearl	Dulux Pearl	971 57225	Satin	✓	
Prelude Blue	Alphatec Plus	961 78824	Satin	✓	
Primrose	Alphatec M32	964 84330	Gloss	✓	PCS 05
Purple Haze Pearl	Dulux Pearl	971 84753	Matt	✓	
Regency Grey	Alphatec Plus	961 50278	Matt	✓	
Rivergum Beige	Alphatec M32	964 30991	Gloss	✓	PCS 11
Red Y14	Alphatec Plus	961 51148	Satin	✓	
Skoji White	Alphatec Plus	961 84632	Satin	✓	
Signal Red R13	Alphatec M32	964 50735	Gloss	✓	
Silver Sea Pearl	Dulux Pearl	971 84653	Gloss	✓	
Smoky Glass	Alphatec Plus	961 78292	Satin	✓	
Sorcerer's Pearl	Dulux Pearl	971 84633	Gloss	✓	
Space Blue	Alphatec M32	964 19990	Gloss	✓	
Special White	Alphatec M32	964 51630	Gloss	✓	PCS 01
Spotlight	Alphatec Plus	961 78535	Satin	✓	
Stone Bidge	Alphatec Plus	961 32538	Matt	✓	PCS 08
Stone Grey	Alphatec Plus	961 78136	Satin	✓	
Storm Front Pearl	Dulux Pearl	971 84634	Satin	✓	
Stromboli	Alphatec Plus	961 84655	Satin	✓	PCS 24
Teal	Alphatec M32	964 51031	Gloss	✓	
Transformer Grey	Alphatec M32	964 32136	Gloss	✓	PCS 12
Tuscan Gold	Alphatec Plus	961 84237	Satin	✓	
Volcanic Pearl	Dulux Pearl	971 84638	Satin	✓	
Watermelon	Alphatec Plus	961 84639	Satin	✓	
Wave	Alphatec Plus	961 84657	Satin	✓	
Wedgeford	Alphatec Plus	961 50279	Satin	✓	
White Birch	Alphatec M32	964 37131	Gloss	✓	PCS 04
White Satin	Alphatec Plus	961 32312	Satin	✓	PCS 02
Yellow	Alphatec Plus	961 84630	Satin	✓	
Wizard	Alphatec M32	964 50233	Gloss	✓	PCS 23
Yellow-Gold Y14	Alphatec M32	964 32617	Gloss	✓	

* Charcoal Mat Pearl formerly known as Charcoal Matt.
 Colorbond Rivergum Green formerly known as Bond Rivergum.
 Colorbond Stone formerly known as Beige.

† Denotes colours available as stock but not displayed on the front of the Colour Selector

Product Performance Matrix

The following matrix outlines a selected range of products available from Dulux Powder Coatings and where these products are commonly applied. For information on these and other products, contact Dulux Powder Coatings Customer Service on 13 2499.

	Product Name	Line No	Typical End Use	Interior	Exterior	Availability		Warranty (Aluminium Only)		Gloss Level			Meets Performance Standard
						Stock	MTD	Film Integrity	Colour	Gloss	Satin	Mat	
General Purpose	Alphatec MX2	984	Architectural & General Industrial	Y	Y	Y	Y	7 years*	-	Y	-	-	AS3715, AS4506, RRA206
	Alphatec Plus	984	Architectural & General Industrial	Y	Y	Y	Y	7 years*	-	-	-	Y	AS3715, AS4506, B56196
	Anotec XT	973	Architectural & General Industrial	Y	Y	Y	Y	7 years*	-	-	-	Y	AS3715, AS4506, B56196
	Crystal	901	Polished Brass	Y	Y	Y	-	-	-	Y	-	-	AS3715
	Dulux Pearl	970	Architectural & General Industrial	Y	Y	Y	Y	7 years*	-	Y	-	Y	AS3715, AS4506, B56196
	Dupol	954	General Industrial (eg furniture, playgrounds)	Y	Y	Y	Y	7 years*	-	Y	Y	Y	AS3715, AS4506, B56196
	Special FX	various	Furniture, Partitioning	Y	Limited	Y	Y	-	-	Y	Y	Y	-
* Warranties for the General Purpose range of powders are available for architectural aluminium substrates through Dulux Registered Applicators and / or Licensed Qualitest Applicators. Other conditions apply.													
Super Durable	Durtec	940	Commercial & Premium Architectural Projects	Y	Y	Y	Y	10 years*	10 years*	Y	Y	-	AAMA 2604 98
	Durtec LX	905	Premium Architectural Projects (eg air doors)	Y	Y	-	Y	15 years*	10 years*	-	Y	-	AAMA 2604 98
	Fluorcoat FP	964	Premium Architectural Projects (eg curtain walls)	Y	Y	-	Y	15 years*	15 years*	-	Y	-	AAMA 2605 98
	Synthetic	911	Commercial Aluminium (eg shopfronts)	Y	Y	-	Y	10 years*	5 years*	Y	Y	Y	AAMA 2604 98
* Warranties for the Super Durable range of powders are available for architectural aluminium substrates through Dulux Registered Applicators. Other conditions apply.													
Functional	Anti Graffiti	910	Bus Shelters, Train Interiors	Y	Y	-	Y	-	-	Y	Y	-	BS 3000
	Armourspray VC	902	Valves, Fittings	Y	Y	Y	-	-	-	-	Y	-	AS4158
	Copol	903	Furniture, Shelving	Y	-	-	Y	-	-	Y	Y	Y	-
	Dupol FPG	959	Ceilings & Hot Dip Galvanising (eg pool fences)	Y	Y	Y	Y	-	-	Y	Y	Y	B56497, AS4506
	Durpoxy	938	Automotive Components	Y	-	-	Y	-	-	Y	Y	Y	-
	Microtec HT	937	Shelving & Racking	Y	-	-	Y	-	-	Y	Y	-	-
	Pyrotec	913/939	BBQ's, Wood Heaters	Y	Y	-	Y	-	-	Y	-	-	-
	Zincriched	980	Primer	Y	Y	Y	Y	-	-	-	Y	-	B56496, B56497 AS4506

Want to know more about Dulux Powder Coatings' products and services?

Visit our website www.duluxpowders.com.au

Dulux

Dulux Australia

A Division of Orica Australia Pty Ltd
ABN 99 004 117 828

Head Office: Victoria

51 Winton Road
Cayton VIC 3168
PO Box 60
Cayton VIC 3169
Phone: 03 9542 4500
Fax: 03 9542 4542

New South Wales

15 Gow Street
Padstow NSW 2211
Locked Bag 707
Milpeira NSW 1091
Phone: 02 9794 9615
Fax: 02 9794 9833

Western Australia

Murphy Street
O'Connor WA 6165
PO Box 151
Melville WA 6156
Phone: 08 9314 4688
Fax: 08 9314 6153

Queensland

Ipswich Road
Rocklea QLD 4106
PO Box 100
Archerfield QLD 4106
Phone: 07 3867 8500
Fax: 07 3867 8592

Tasmania

Westbury Street
Prospect TAS 7250
PO Box 122
Prospect TAS 7250
Phone: 03 6344 4555
Fax: 03 6344 2543

South Australia

21-23 Tinkalara Street
Ferguson Park SA 5010
PO Box 2291
Ferguson Park SA 5010
Phone: 08 6348 4100
Fax: 08 6348 4199

New Zealand

315 Hillside Road
Glenfield NZ
PO Box 10 1886
North Shore Mail Centre NZ
Phone: 64 9 441 8244
Fax: 64 9 441 8242

Customer Service: Australia Order Hotline: 13 2499 (All States) Free Call Fax: 1300 804 649

© Dulux is a registered trademark of Orica Australia Pty Ltd

Alphatec MX2, Alphatec Plus, Armourspray VC, Anotec XT, Copol, Dulux Pearl, Dupol, Dupol FPG, Duratec, Duratec LX, Durpoxy, Fluorcoat FP, Microtec HT, Synthetic and Zincriched are registered trademarks of Orica Australia Pty Ltd. Anti Graffiti, Crystal, Special FX and Pyrotec are trademarks of Orica Australia Pty Ltd.

Any advice, recommendation, information, assistance or service provided by Dulux Australia (Dulux) in relation to goods manufactured by it or their use and application is given in good faith and is believed by Dulux to be appropriate and reliable. However, any advice, recommendation, information, assistance or service provided by Dulux is provided without liability or responsibility PROVIDED THAT the foregoing shall not exclude, limit, restrict or modify the rights, entitlements and remedies conferred upon any person, or liabilities imposed upon Dulux, by any condition or warranty implied by a Commonwealth, State or Territory Act or ordinance rendering void or prohibiting such exclusion, limitation, restriction or modification.



ORICA
AN Orica
BUSINESS



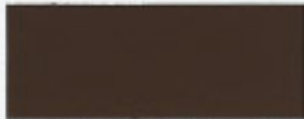
Shoji White 84682



Fashion Grey 78242



Smokey Glass 78292



New Hammersley Brown 84657



Aubergine 84736



Anotec XT Mid Bronze 51014



Rivergum Beige 36991



Barley 50058



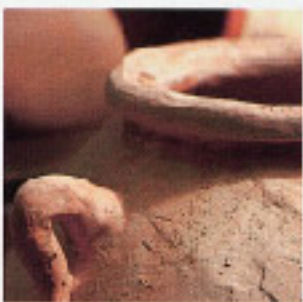
Ivory Coast 82063
• Colorbond Merino(similar) 84212



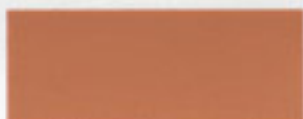
Stone Beige 32538



Pottery 33662



• Colorbond Pale Terracotta 84738



Clay Pot 72165



White Satin 32312



White Birch 37131



Anotec XT Off White 51271



Magnolia 32658



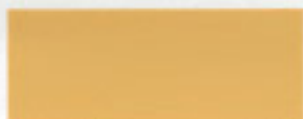
Barrister White 84672



• Colorbond Smooth Cream 84755



Light Topaz 73018



Tuscan Gold 84207



New Bright White 84636



Special White 81880



• Colorbond Birch 84763



• Colorbond Stone 84215



Canola Cream 81796



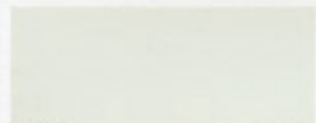
Primrose 84365



Sand Y44 51438



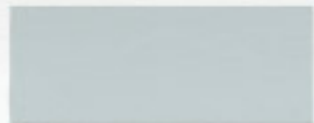
Doeskin 32516
• Colorbond Wheat (similar) 84765



Off White 33732



Ocean Mist 83250



Periwinkle 50276



• Colorbond Gull Grey 83246



• Colorbond Off White 84608



Transformer Grey 32186



Azure Grey 36603



APO Grey 32786



Oyster 36858



Anotec XT Silver Grey 51272



• Colorbond Armour Grey 84760



Stone Grey 78126



Arrowhead 50258



Olde Pewter 50243



• Colorbond Slate Grey 84220



Notre Dame 36672



Black Gloss 32694



Charcoal 32999



Berry Grey 81973



Black Matt 19319



Black Satin
• Colorbond Ebony 19268



Anotec XT Dark Grey 51275



Grey Nurse 50060



Willow 84690



Horizon Blue 33344



Regency Grey 50278



Light Grey 32519



Wave 84677



Wedgewood 50279



Moss Vale Sands 33019



Prelude Blue 78824



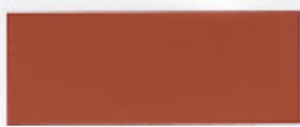
• Colorbond Mist Green 84221



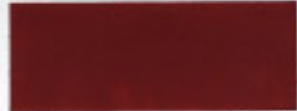
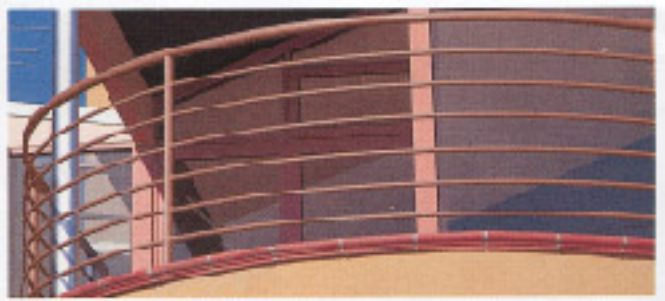
Blaze Blue 19941



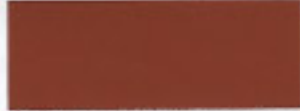
Hunter Red 84209



• Colorbond Tuscan Red 84761



Claret 32774



• Colorbond Heritage Red 84752



Signal Red R13 50735



Yellow Gold Y14 33617



Spotlight 78595



Watermelon 84689



Orange X15 51439

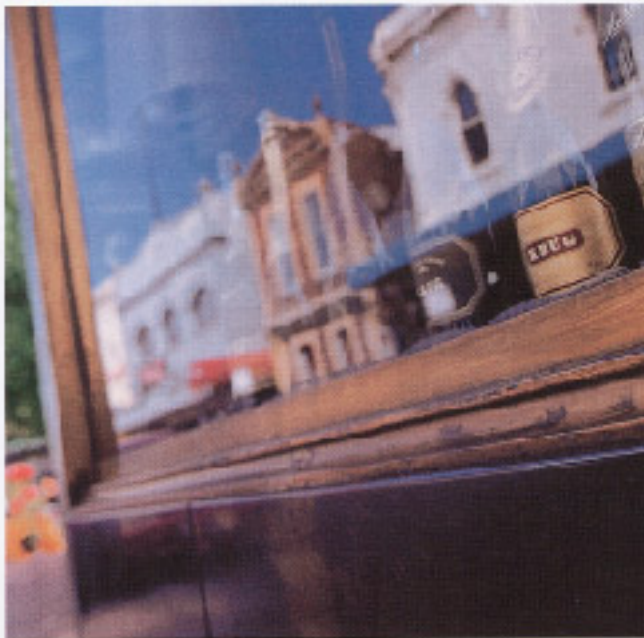


Lemon Yellow 32120

Dulux Pearls



Metropolis Bronze Pearl 59003



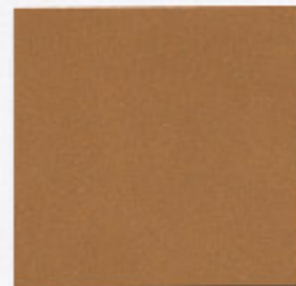
Black Onyx Pearl 52052



Precious Bronze Pearl 94686



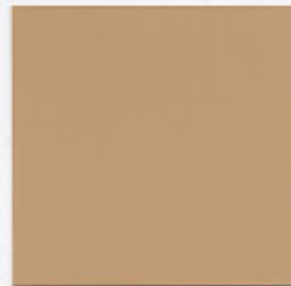
Purple Haze Pearl 84753



Precious Copper Pearl 96605



Precious Gold Pearl 96604



Beech Pearl 84673



Volcanic Pearl 84688

The colours represented on this chart are as close to the actual colours as modern printing processes allow.



Powder Coat

Worth doing, w

• Represents the current Colorbond roofing range. Colorbond is a registered trademark of BHP Steel (JLA) Pty. Ltd.



• Colorbond Rivergum Green 84224



Admiralty 51017



Deep Pool 78902



Pommel Blue 51034



• Colorbond Caulfield Green 84219



• Colorbond Torres Blue 84206



Patina 51041



Space Blue 19990



Classic Hawthorn Green 33709



Wizard 50283



Stromboli 84655



Corio Blue 85008



Deep Brunswick Green 50068



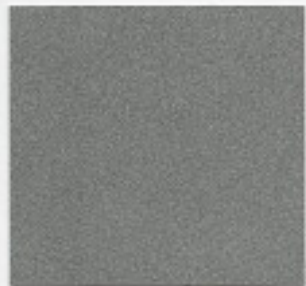
• Colorbond Mountain Blue 83249



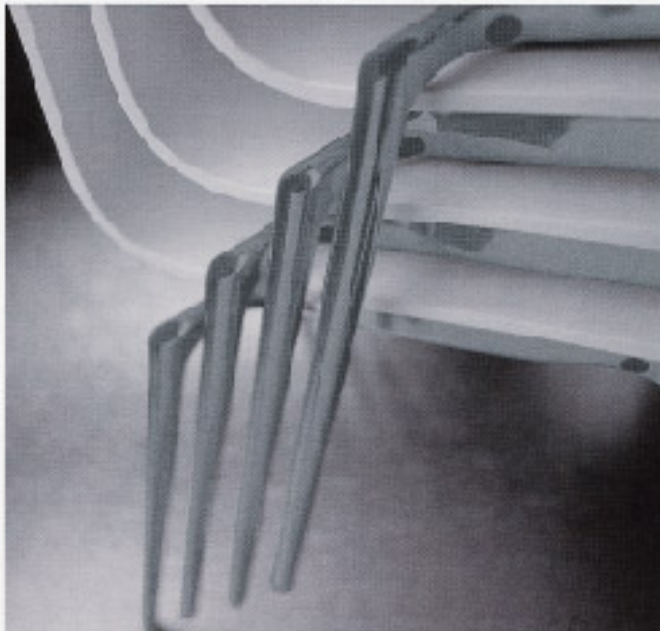
Teal 51651



Navy 50282



Precious Silver Pearl 57225



Mother of Pearl 84678



Silver Glo Pearl 84623



Misty Blue Pearl 84680



Storm Front Pearl 84684



Charcoal Met Pearl 18796



Deep Sea Pearl 84681



Sorcerer's Pearl 84683